

Cambodia Australia Partnership for Resilient Economic Development



MISSION

The Cambodia Australia Partnership for Resilient Economic Development (CAPRED) is Australia's flagship economic development program in Cambodia. Funded by the Australian Government, CAPRED is an A\$87 million five-year initiative (2022–2027).



CAPRED's goal is to help Cambodia achieve resilient, inclusive and sustainable economic growth.



CAPRED was designed in consultation with the Royal Government of Cambodia (RGC), the private sector, non-government organisations and other development partners. It aligns with the RGC's Pentagonal Strategy and Australia's International Development Policy.

CAPRED supports the public and private sectors to strengthen the economy by driving the adoption of new ideas, technologies and policies that foster competitiveness, investment and trade. CAPRED's development approach improves water and food security and promotes growth opportunities that protect and sustain the natural environment.

The program works to ensure all Cambodians – regardless of gender, ethnicity or physical ability – benefit equally from policy reforms, financing mechanisms, and access to skills, tools, technologies and markets. Its interventions focus on increasing resilience to climatic, economic and other shocks.

APPROACH

CAPRED is designed to be *adaptive, innovative, catalytic and transformative*.

The program's success depends on providing solutions that expand beyond its direct beneficiaries to create broad and lasting change.

CAPRED **introduces** solutions



CAPRED identifies critical issues hindering diversified economic growth, trade and investment, agricultural competitiveness, and water and energy infrastructure development.



CAPRED designs innovative, targeted solutions and engages with partners for implementation through pilots, partnership agreements and technical assistance.

CAPRED **scales** solutions



CAPRED evaluates the success of these solutions, particularly the impacts on people living in poverty, women, people with disability and other marginalised groups. The approaches that work are expanded and scaled.



CAPRED synthesises on-the-ground experience and provides actionable market intelligence to direct investment and support where it is most needed.

CAPRED **embeds** solutions



CAPRED influences behaviour change to foster widespread uptake by communities and businesses of proven approaches in agriculture, trade and infrastructure.



CAPRED catalyses and embeds solutions through facilitating policy reforms, informed by evidence, for resilient, inclusive and environmentally sustainable economic growth and development.

CAPRED streamlines engagement with the public and private sectors around *critical drivers of change*:



Policies



Markets



Technologies



Finance



Women's
Economic
Empowerment

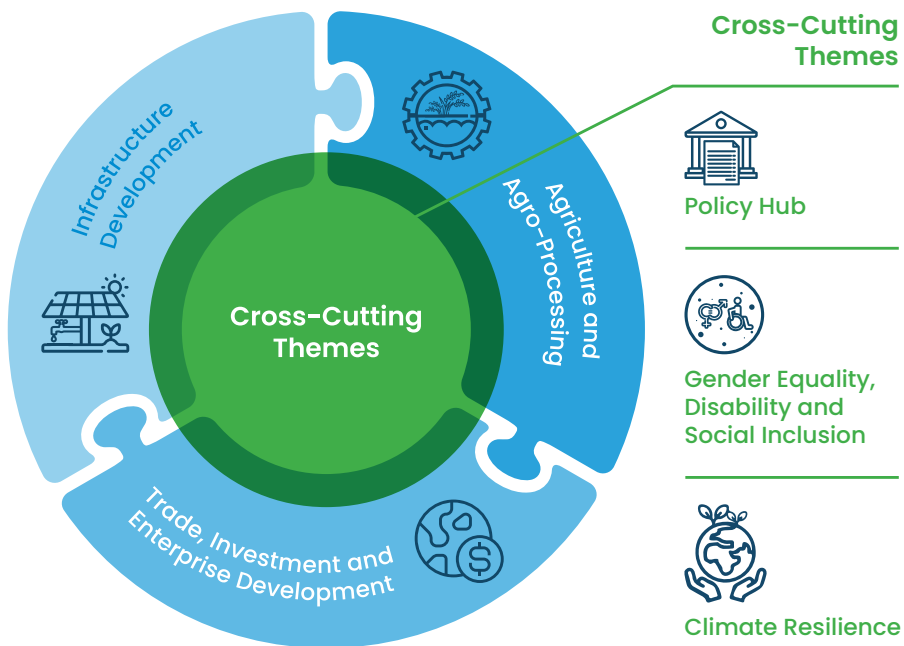
PARTNERSHIP

CAPRED prioritises partnership at all levels. CAPRED is not a stand-alone program but a collaborative platform for coordinated, positive economic impact. CAPRED works closely with the RGC, the private sector and development organisations to achieve outcomes.



3+3 FOCUS CROSS-CUTTING THEMES AND DOMAINS

CAPRED focuses on three cross-cutting themes and three technical domains to catalyse Cambodia's resilient, inclusive and sustainable economic growth.



These cross-cutting themes and technical domains are further divided into 10 portfolios:

Policy Hub | Gender Equality, Disability and Social Inclusion (GEDSI) | Climate Resilience | Agricultural Production | Agro-Processing | Trade | Investment | Enterprise Development | Water | Energy

Cross-Cutting Themes



Policy Hub

CAPRED, through its Policy Hub, partners with the RGC to drive informed and inclusive economic policy development using market intelligence and findings from investments.



Gender Equality, Disability and Social Inclusion (GEDSI)

CAPRED mainstreams GEDSI principles across its interventions and initiatives to ensure marginalised Cambodians fully participate in and benefit from economic development by: addressing barriers and social norms that exclude women, people with disability and other groups from services and opportunities; strengthening the care economy; promoting equitable agriculture, business and trade practices; and embedding inclusive and transformative policies and approaches in RGC agencies and the private sector.



Climate Resilience

CAPRED prioritises climate change adaptation and mitigation across its programming through solutions such as climate-smart agriculture and agri-food systems, emission-mitigating infrastructure, climate-resilient enterprises and supply chains, and climate-responsive policies that contribute to climate finance.

Domains



Agriculture and Agro-Processing

CAPRED works with farmers, agri-businesses and the RGC to accelerate innovation in agriculture through technology and the introduction of climate-smart crop varieties, improve climate resilience in the sector, and produce high-value agri-foods that meet evolving market requirements.



Trade, Investment and Enterprise Development

CAPRED promotes better trade and investment by supporting policies and tools that foster a varied, inclusive and competitive investment market; building capacity of small and medium-sized enterprises in export readiness, with a focus on GEDSI-transformative enterprise development; and creating linkages between agri-food exporters and investors.



Infrastructure Development Water and Energy

CAPRED continues Australia's long-term partnership with the RGC and the private sector to build climate resilience and energy and water security for Cambodia through expanding access to electricity and piped, treated water; supporting policies and approaches that increase renewable energy capacity and access; and improving energy efficiency.

Contact us:

 GIA Tower, 17th Floor, Sopheak Mongkol Rd,
Koh Pich, Phnom Penh, Cambodia

 info@capred.org



[@CAPREDProgram](#)



t.me/capredprogram



[@AustralianEmbassyPhnomPenh](#)

Telegram QR Code



CAPRED is funded by the Australian Government and implemented by Cowater International.